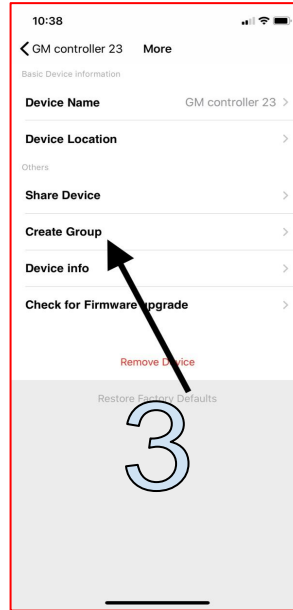
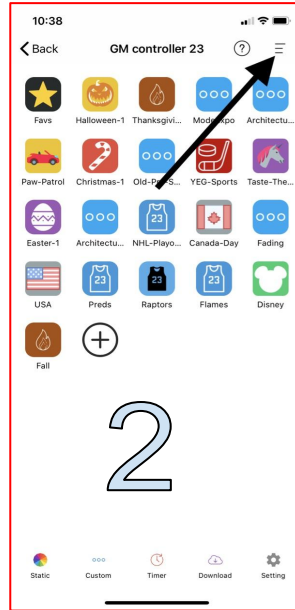
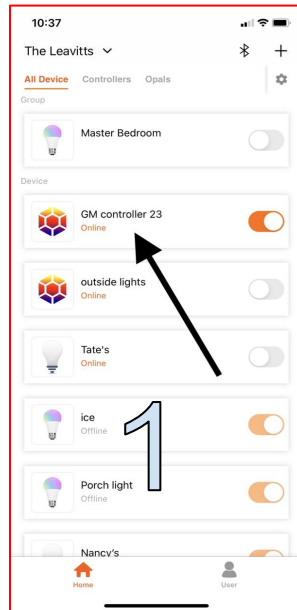


How to Create a Group

Use this to control multiple HUB controllers at once



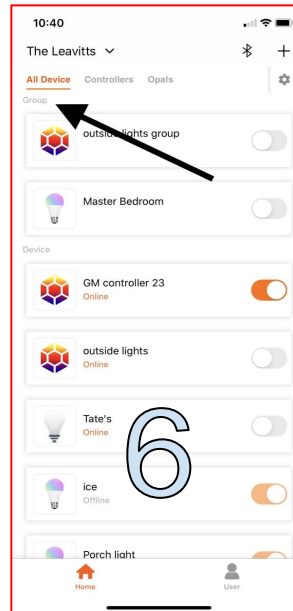
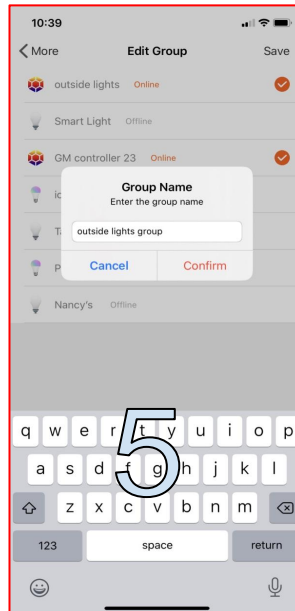
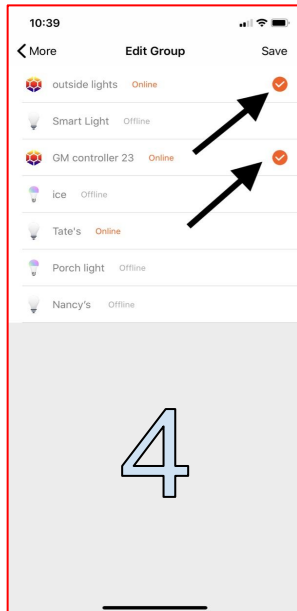
#1 Choose a controller that you would like to add to a group

#2 Select the settings

#3 Create the Group

#4 Touch on the line of the controllers that you want grouped together. A checkmark should be displayed. Only same type devices can be selected.

#5 Name the Group



#6 The new group will be organized under the group settings at the top of the page